

# OUR FUTURE IS BRIGHT

FEBRUARY 2020



# OUR GOAL:



- ❑ An academically rigorous educational program
- ❑ Within a safe and supportive environment
- ❑ With a fiscally conservative approach



# DISTRICT'S "WHY"



# EVERY Student Matters



**Every single day, every student  
is growing - academically,  
social-emotionally, behaviorally**

# DISTRICT DEMOGRAPHICS

- 4,600 students & growing
- 11 Neighborhood Schools
- Large Geographical Area
  - >> 3100 bus miles/day
- Considerable Economic Impact
  - >> 700+ Employees
- Significant Extra-Curricular Participation & Community Support

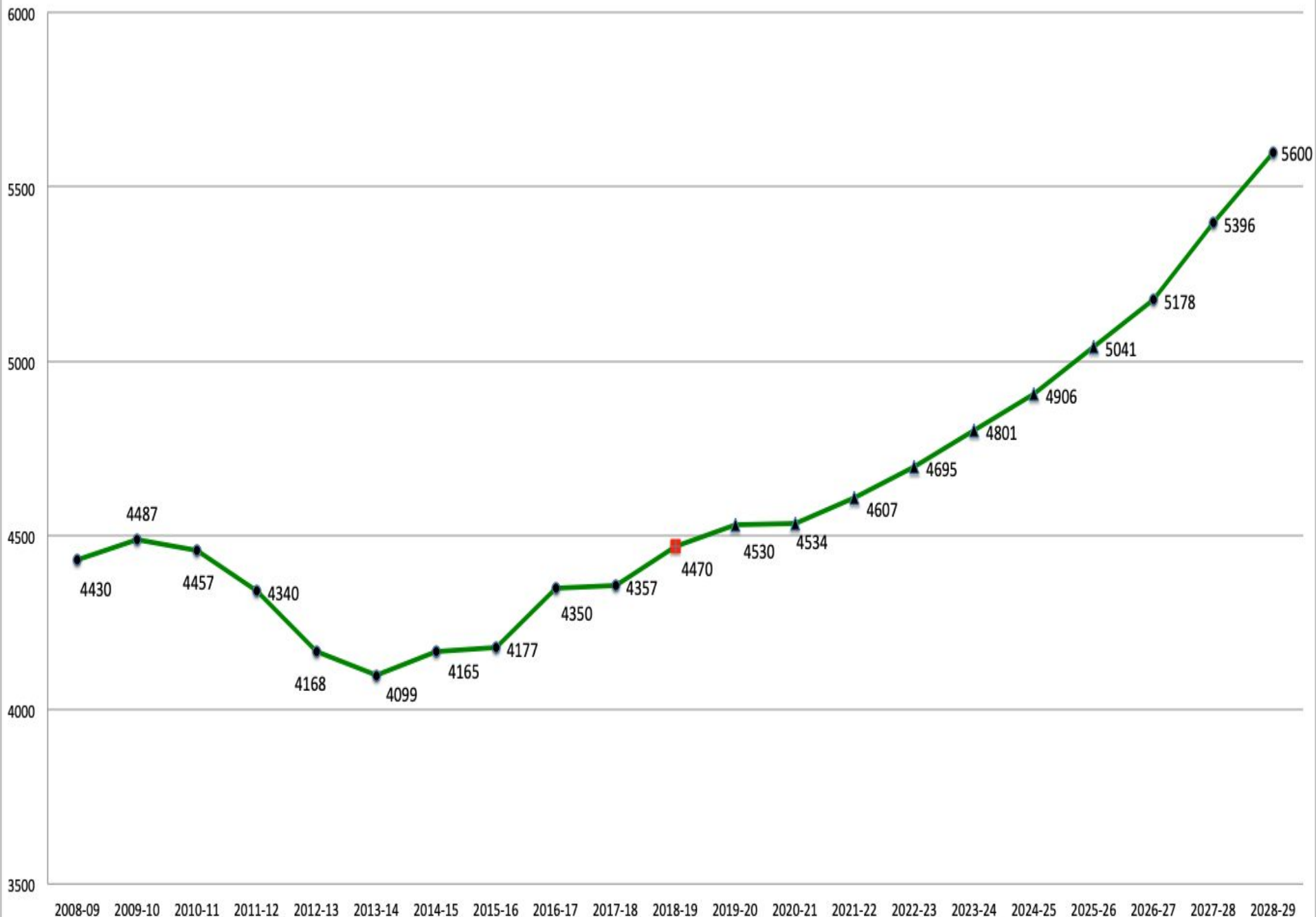


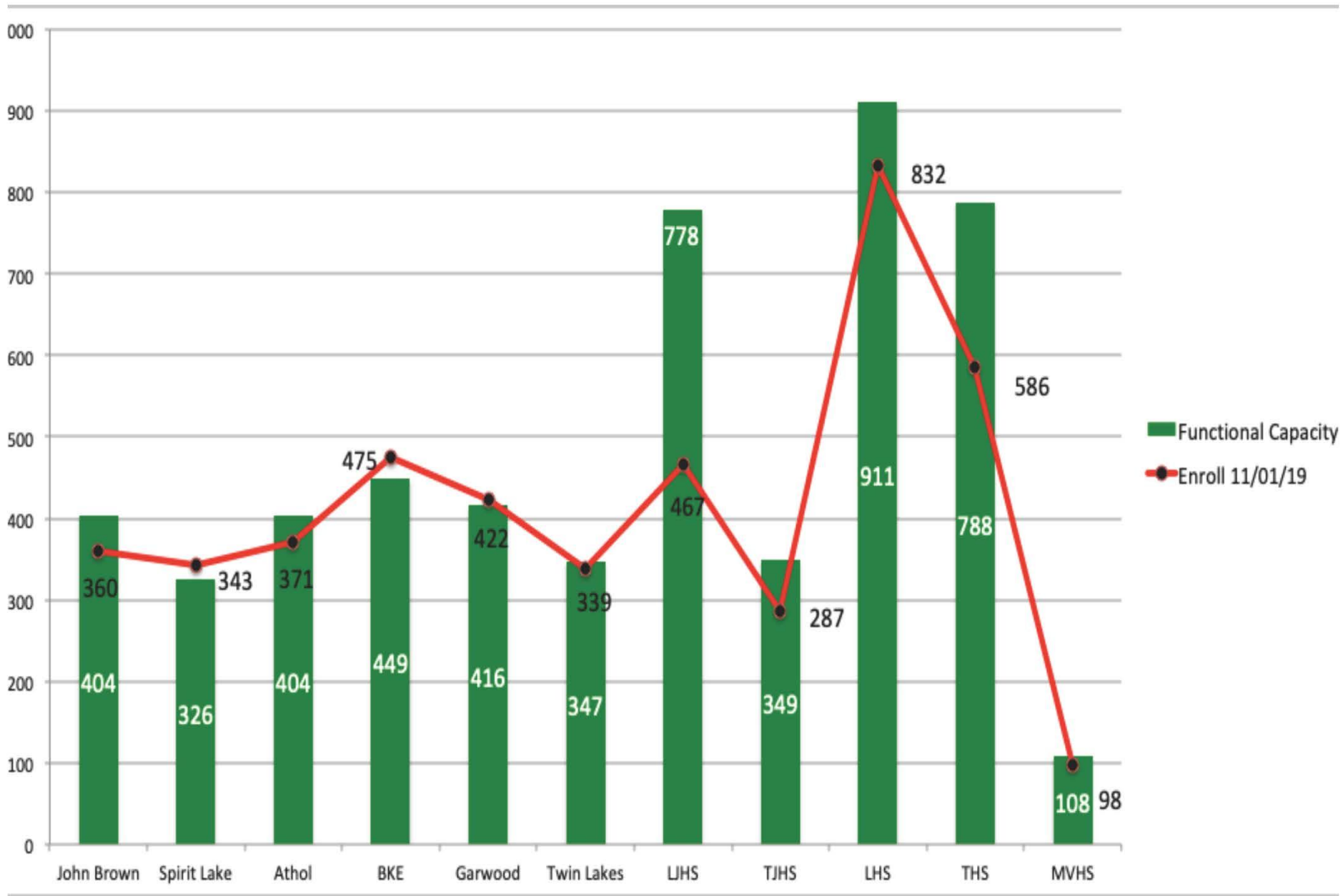


# ADDRESSING GROWTH



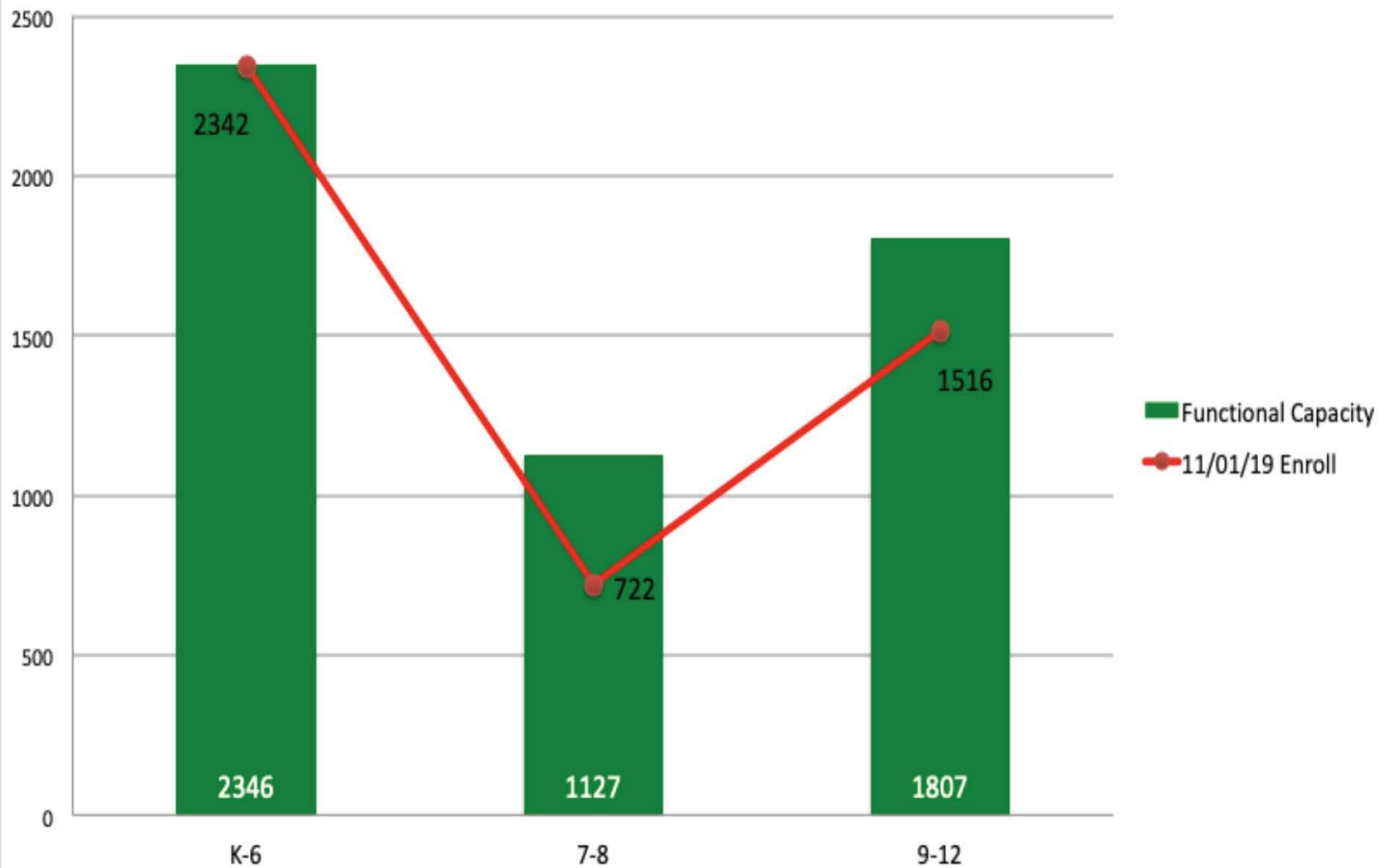
Lakeland Enrollment Projection - CoHort Model



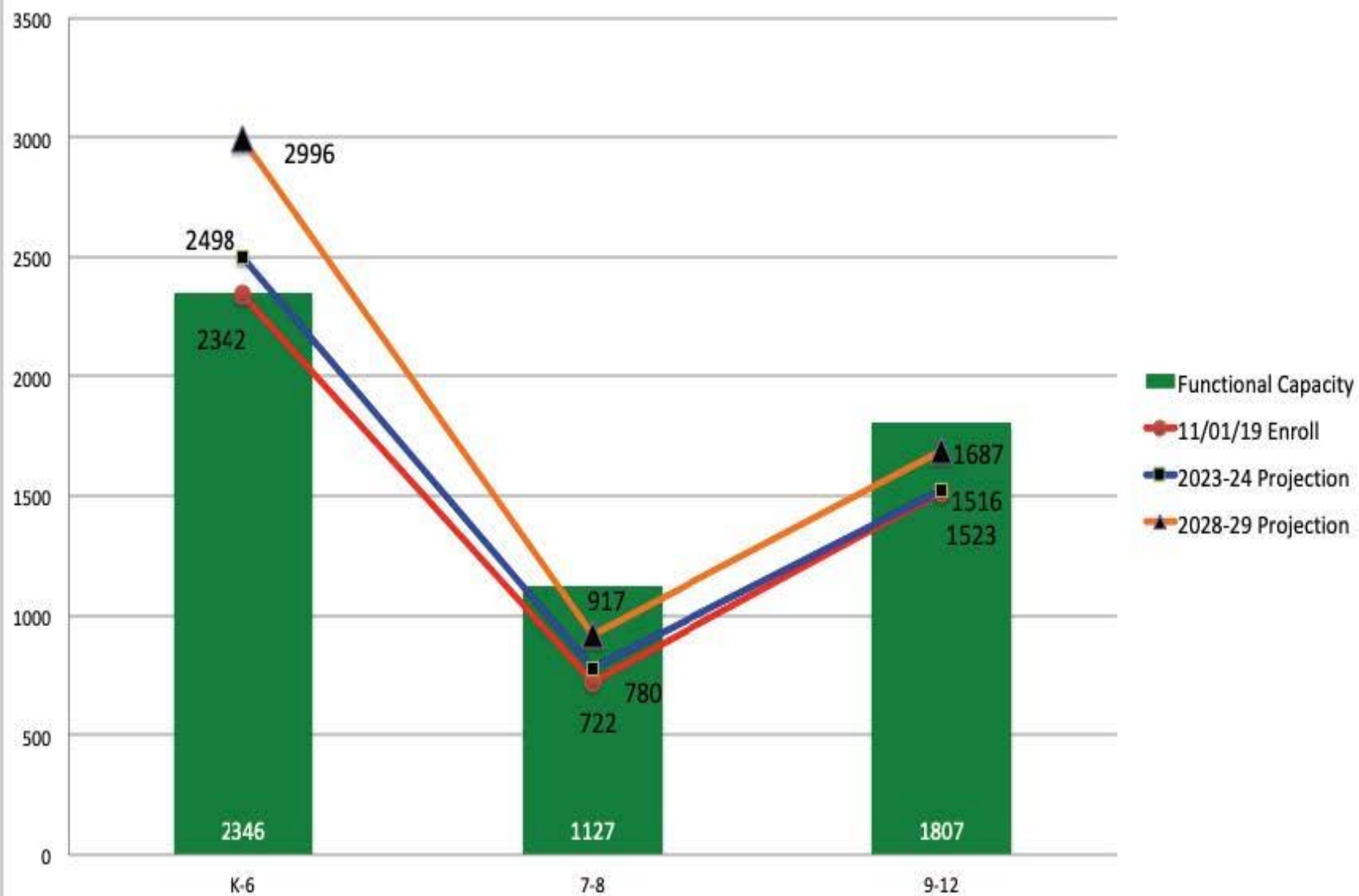




**Lakeland 272 Building Capacity - By Grade Span**



Lakeland 272 Building Capacity - By Grade Span





# LONG RANGE FACILITY PLANNING





# LRFP COMMITTEE

## FULL REPORT



# Current Reality Creates the Following Priorities:

- Elementary Schools, K-5
- Transition Plan to 6-8 Middle Schools
- Add an Elementary School on donated land
- Acquire land for a future Elementary School in high growth area
- Lakeland High School moved next to KTEC at 10-12 year mark (capacity for 1200 students, 4A high school)
- Continuation of Safety and Security Implementation (additional Armed Guards, increased safety measures)





# FISCAL ACCOUNTABILITY



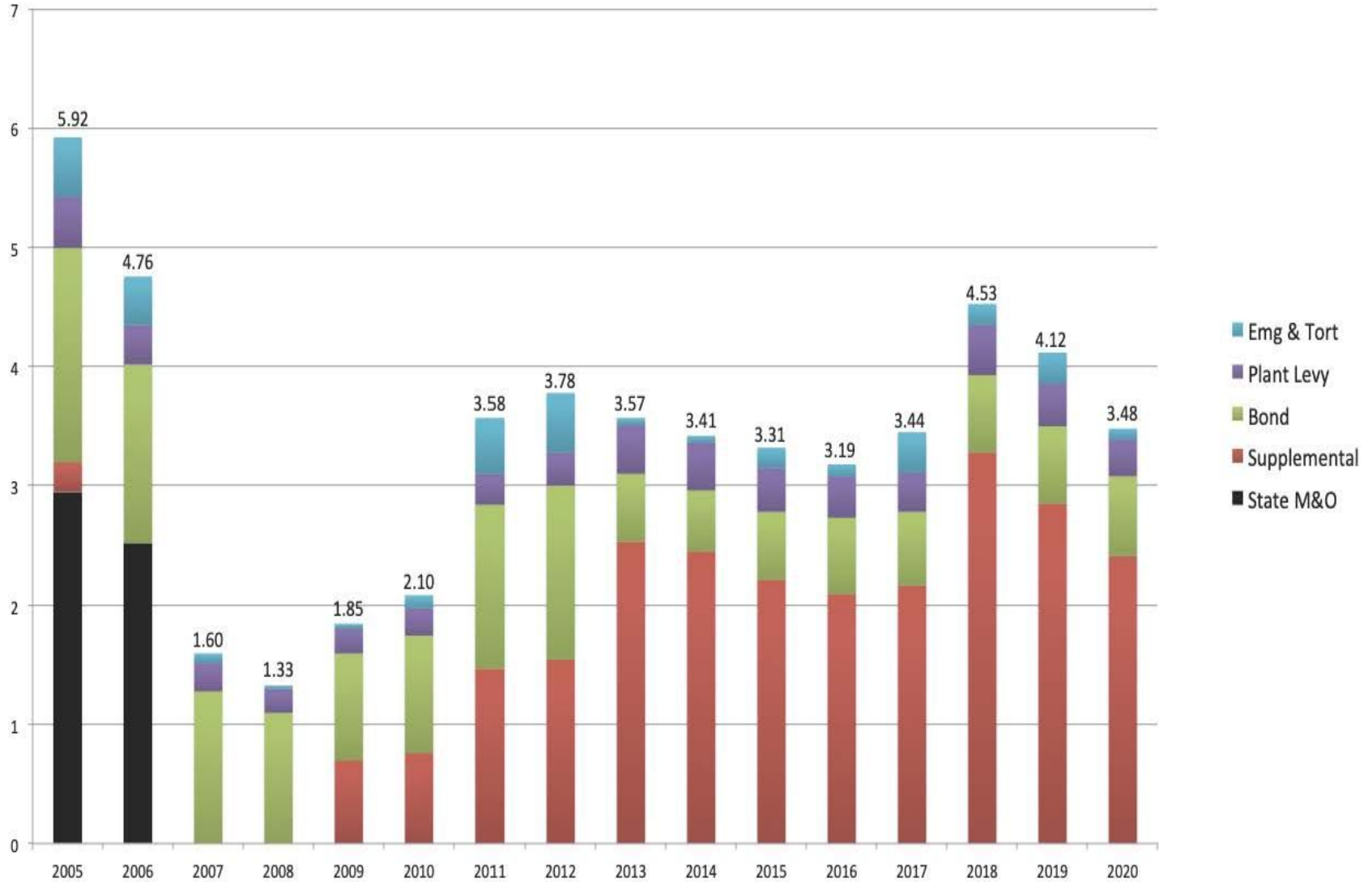


# ACCOUNTABILITY REPORT

2X PER YEAR



# LJSD Property Tax History







# COMMUNITY SATISFACTION



96.4%

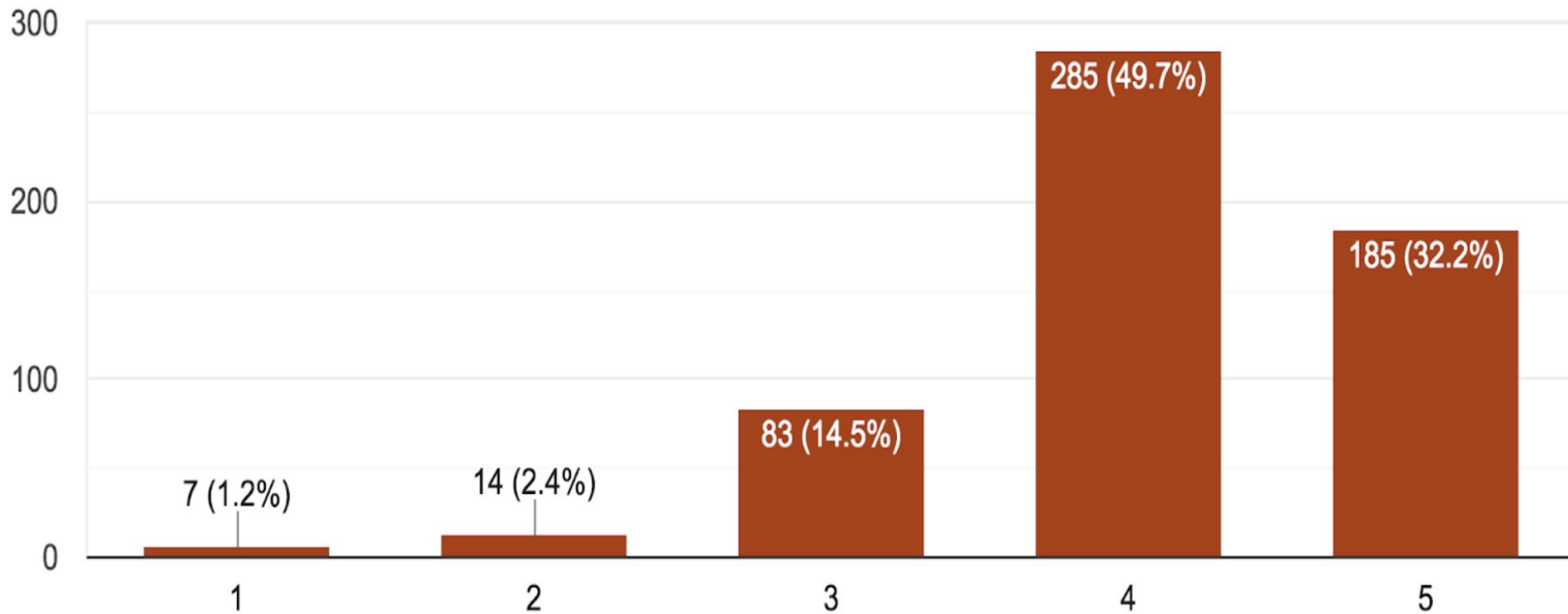
**Parents Satisfied and Above  
with our District**

# **Satisfaction Level with the District**

- 5 - Extremely Satisfied
- 4 - Very Satisfied
- 3 - Satisfied
- 2 - Not Satisfied
- 1 - Extremely Dissatisfied

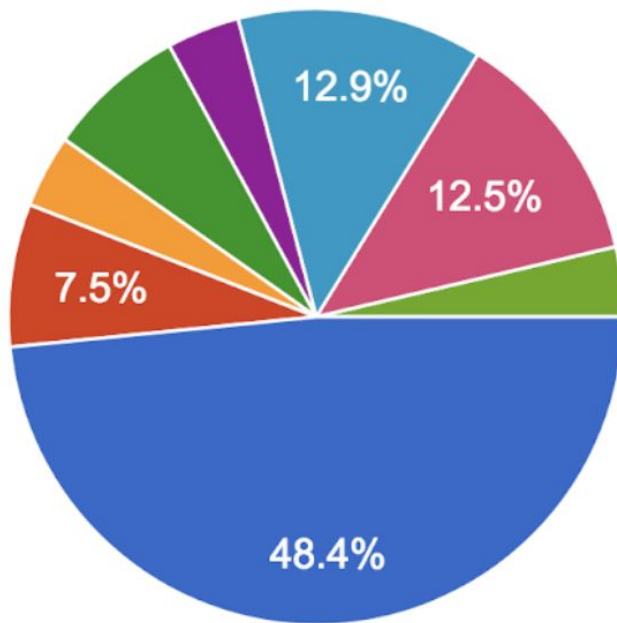
# Parent Survey Results

## My Overall Satisfaction with the Lakeland Jt. School District:



# Parent Survey Results

## What I Like Most about the District:



- Teachers and Staff
- Character of the students in our district
- Level of academic rigor
- Educational opportunities
- Extra-curricular programs/opportunities
- Family atmosphere
- Overall district functioning
- Other areas (describe below)



COMMUNITY SUPPORT

=

STUDENT RESULTS



# RETURN ON INVESTMENT

- Consistent high academic performance
- 92.2% = District Graduation rate
  - State Average = 79.67%
  - Highest Alternative School Grad Rate in the State
- Outperformed State SAT average at THS and LHS
- 2019 - Idaho State Teacher of the Year - Stacie Lawler, TJHS
- 2019 - Counselor of the Year - Justine Litzko, Twin Lakes Elementary
- Sources of Strength grant programs at all Secondary Schools
- National Blue Ribbon School = Garwood Elementary
- THS & LHS = both High Schools named in "America's Best High Schools in the U.S." Bronze category by US News and World Report, 2018 and prior years



# RETURN ON INVESTMENT

- In the top 10 for students accessing Advanced Opportunities funds from the State
- \$1.8 million in scholarships awarded to graduating seniors (2018)
- Betty Kiefer Elem recognized as National School of Character - First EVER in Idaho
- Top Gold at State for 2 years - Lakeland HS FCCLA
- Timberlake JH ranked #4 in the state by Niche
- Lakeland HS Wrestling team - District Champions, 9 consecutive years
- Lakeland HS's Student Council raised over \$7,000 for local Lion's Backpack program in 2019 "Battle for the Paddle" Spirit Competition





# RETURN ON INVESTMENT

- Mentioned as one of the top districts in the state by Superintendent of Public Instruction Ybarra, in JFAC presentation
- Extra-Curricular Participation = 80-85% of the student body overall
- For the seventh consecutive year Timberlake High School's Student Council received the "Outstanding Student Council Award" for the state of Idaho
- Timberlake students donated 168 units of blood through the leadership blood drives
- Highest # of Dual Credit students at NIC = LHS & THS
- Highest # of Microsoft Certifications in Idaho, LHS & THS



# RETURN ON INVESTMENT



- Above Average Growth on K-3 State Reading Indicator (IRI)
- 2016 AND 2017 Timberlake HS Girls Basketball State Champions
- THS Boys Soccer District Champs, first ever = 2018
- Advanced Learning Program in our elementary schools
- THS students win Northwest Student Emmy Award for coverage of Rachel's Challenge
- Student Led Conferences at all elementary schools in 2019
- Successful FFA/Ag-Ed program at THS implemented in 2018
- STEAM programs in elementary schools
- THS Tiger TV State finalists - 2018 - Business Professionals of America

“

*I think we have amazing teachers and staff that work with our students. I also appreciate that there is a high level of academic rigor so that I know my kids are being challenged and will be prepared for the future. I think we have a good amount of offerings for our students to take advantage of in both sports and extra-curricular.*

— • —

“

I ABSOLUTELY LOVE EVERYTHING ABOUT LAKELAND SCHOOL DISTRICT. THANK YOU FOR YOUR EXCELLENCE AND OUR CHILDREN'S SAFETY FIRST AND FOR MOST. ALSO, YOU GUYS ROCK WITH COMMUNICATION BETWEEN STAFF AND PARENTS, UPCOMING EVENTS, AND EMERGENCY SITUATIONS.



“

“I LOVE THAT OUR SCHOOLS ARE WARM, INVITING PLACES FOR OUR STUDENTS TO BE. I APPRECIATE ALL OF THE EDUCATIONAL OPPORTUNITIES THE DISTRICT PROVIDES TO OUR STUDENTS.”

— • — • — • — • —

“

LEVEL OF ACADEMIC RIGOR, EDUCATIONAL  
OPPORTUNITIES, OVERALL FUNCTIONING, FAMILY  
ATMOSPHERE

— • —

# MOVING FORWARD:

Maintain  
Transparency

Continue to  
Gather Input

High  
Expectations for  
ALL Students

*Every Individual Student is Learning and  
Growing Academically, Social-Emotionally,  
and Behaviorally Every Day in our District*





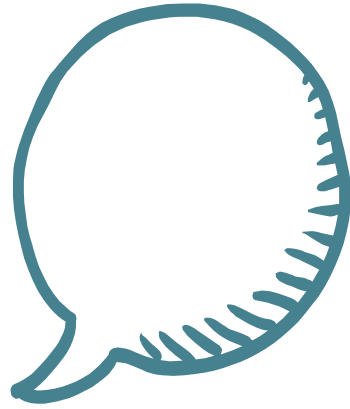
# THANK YOU FOR SUPPORTING OUR COMMUNITY'S SCHOOLS





MUCH GRATITUDE





# ANY QUESTIONS?

Contact: Superintendent, Dr. Meyer

- [becky.meyer@lakeland272.org](mailto:becky.meyer@lakeland272.org)
- 208-687-0431